

Posturite Carbon Reduction Plan

Publication date: 16/08/2023

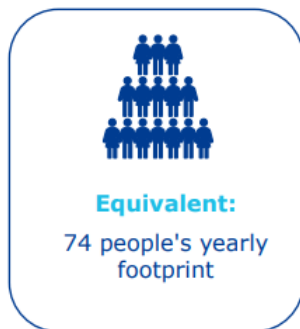
Commitment to achieving Net Zero Posturite is committed to achieving Net Zero emissions across scope 1 and 2 (i.e. its operations) by 2035, and Net Zero for scope 3 by 2050.

Baseline Emissions Footprint

Baseline emissions are a record of the greenhouse gases that have been produced in the past and were produced prior to the introduction of any strategies to reduce emissions. Baseline emissions are the reference point against which emissions reduction can be measured.

Baseline Year: 2022

Posturite 2022 Corporate Carbon Footprint



Emission Source	Emissions [t CO2]	Emissions [%]
Scope 1	115.87	15.5%
Scope 2	90.89	12.2%
Scope 3	539.65	72.3%
Overall results	746.41	100.0%

Additional Details relating to the Baseline Emissions calculations.

Posturite calculated its company carbon emissions for its baseline year (January 1st 2022 – December 31st 2022) with an official 3rd party, ClimatePartner, in accordance with the guidelines of the *Greenhouse Gas Protocol Corporate Accounting and Reporting Standard* (GHG Protocol) The calculation of Posturite's Corporate Carbon Footprint (CCF) considered its single UK office and included all scope 1 and 2 activities, as well as some relevant scope 3 emissions including:

- Packaging materials
- Electronic devices
- Print products
- Office paper
- Water
- Upstream electricity
- Business travel (rental and private vehicles, flights, rail and hotel nights)
- Employee commuting
- Home office



Posturite will extend its 2023 CCF measurement to include further scope 3 categories including all purchased goods and services (products), transportation and distribution of goods (inbound and outbound logistics of products), and end-of-life treatment of sold products.

Baseline year emissions: 2022

EMISSIONS	TOTAL (tCO ₂ e)
Scope 1	115.87
Scope 2	90.89
Scope 3 (Included Sources)	539.65
Total Emissions	746.41

Current Emissions Reporting

Reporting Year: 2022	
EMISSIONS	TOTAL (tCO ₂ e)
Scope 1	115.87
Scope 2	90.89
Scope 3 (Included Sources)	539.65
Total Emissions	746.41



Emissions reduction targets

In order to continue its progress to achieving Net Zero, Posturite commits to reducing its scope 1 and 2 emissions from its base year calculation in 2022 in line with science-based targets (SBT), by 90% by 2035. This is an absolute reduction of 6.9% (of baseline year scope 1 & 2 emissions) every year until 2035.

Furthermore, Posturite commits to expanding the calculation of its scope 3 categories and setting science-based targets to cover this subset of emissions. Based on its 2022 calculation, it commits to reducing scope 3 emissions from its base year, in line with SBTi, by 90% by 2050, meaning an absolute reduction of 3.2% of baseline emissions per year.

Posturite projects that carbon emissions will decrease in its scope 1 and 2 categories over the next thirteen years to **20.68tCO₂e** by **2035**. This is a reduction of **90%** in line with science-based targets Net Zero guidance.

Posturite also projects the decrease in its scope 3 emissions to **53.97 tCO₂e** by **2050**. This is a reduction of **90%** in line with science-based targets Net Zero guidance.

1. ABSOLUTE EMISSIONS BASED TARGET SETTING METHODS			
Section 1.1. Input data (absolute targets)			
Target coverage	Scope 3		
Target setting method	Absolute contraction	To calculate intensity targets, please use Section 2.1. Input data (intensity targets)	
Base year	2022		
Target year	2050		
Sector pathway	Cross-sector pathway	Please select sector pathway	
Scope 1 emissions		tCO ₂ e	
Scope 2 emissions		tCO ₂ e	
Scope 3 emissions	539.65	tCO ₂ e	
Total emissions in Scope 3 (tCO ₂ e)	539.65	tCO ₂ e	
Section 1.2. Absolute target results			
	Base year (2022)	Target year (2050)	% Absolute Reduction
Company Scope 3 (tCO ₂ e)	539.65	53.97	90.0%
Long Term SBT formulation	Posturite commits to reduce Scope 3 emissions 90% by 2050 from a 2022 base year		

1. ABSOLUTE EMISSIONS BASED TARGET SETTING METHODS

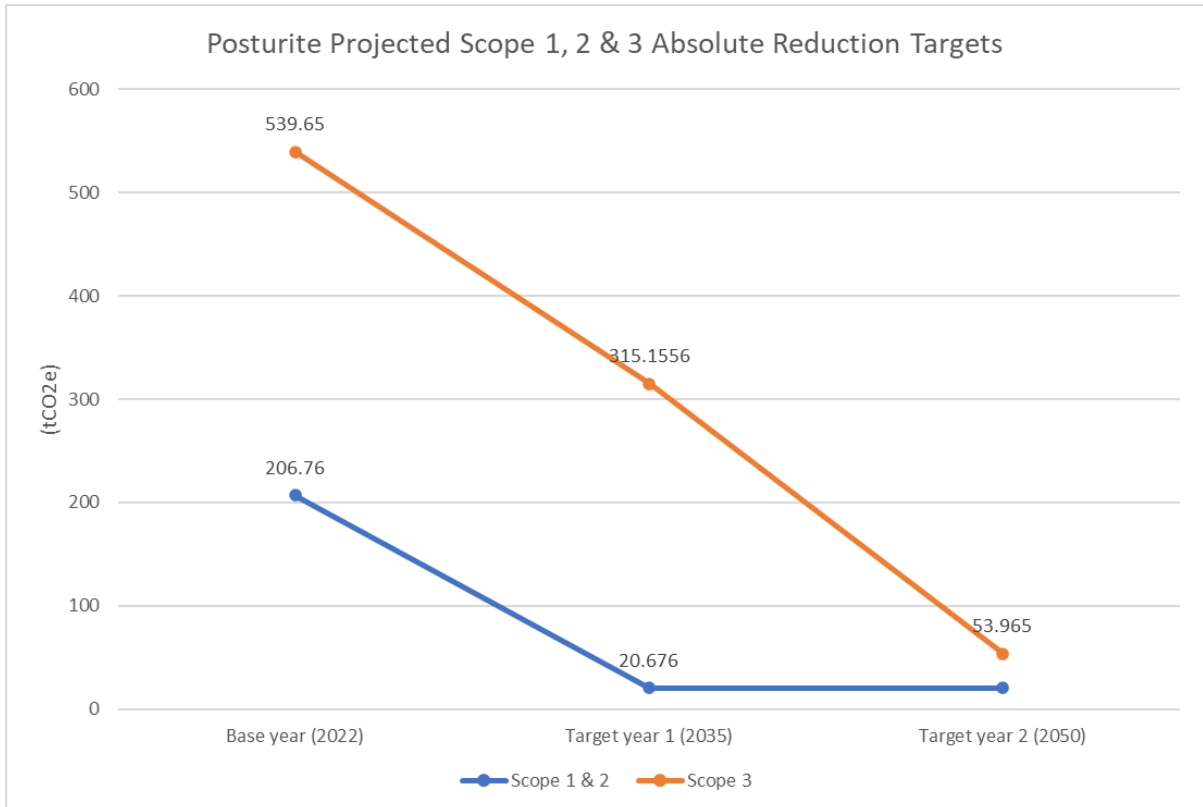
Section 1.1. Input data (absolute targets)

Target coverage	Scope 1 & 2	
Target setting method	Absolute contraction	To calculate intensity targets, please use Section 2.1. Input data (intensity targets)
Base year	2022	
Target year	2035	
Sector pathway	Cross-sector pathway	Please select sector pathway
Scope 1 emissions	115.87	tCO2e
Scope 2 emissions	90.89	tCO2e
Scope 3 emissions		tCO2e
Total emissions in Scope 1 & 2 (tCO2e)	206.76	tCO2e

Section 1.2. Absolute target results

	Base year (2022)	Target year (2035)	% Absolute Reduction
Company Scope 1 & 2 (tCO2e)	206.76	20.68	90.0%
Long Term SBT formulation	Posturite commits to reduce Scope 1 & 2 emissions 90% by 2035 from a 2022 base year		

Progress against these targets can be seen in the graph below:



Carbon Reduction Projects

Completed Carbon Reduction Initiatives

Prior to its first carbon emission calculation, Posturite already implemented carbon reductions in its scope 2 by removing all electricity derived from fossil fuel from its head office in Berwick. Its electrical usage is sourced from 100% renewable energy (Bioenergy 47.8%, Wind 32.7%, Solar 11.7% and hydro 7.8%) through Drax.

Posturite has been ISO 14001 Environmental management Systems certified since 2008 and Forest Stewardship Council (FSC) certified.

In the future Posturite plans to implement further measures such as:

Scope 1& 2

1. Reducing vehicle fleet emissions (27.7% of CCF) through route optimization methods such as delivery planning.
2. Transition to electric vehicle fleet when possible.

Scope 3

3. Reduce business travel emissions (13.4% of CCF) by implementing a sustainable travel policy that limits physical travel (especially by rental vehicle which contributes 10.8% of CCF emissions) switching from car and plane trips to rail travel where necessary and encouraging the use of virtual meetings.
4. Engage with employees to reduce commuting emissions (13.7% of CCF) through education and encouragement of cycle-to-work, carpooling, rail travel (through Easit), and working from home options. Furthermore, encourage employees to switch to electric vehicles by installing EV charging points at head office.
5. Tackle the biggest emission hotspot, packaging (under the category of 'purchased goods and services) which contributes 42% of the total CCF by exploring the following reduction projects: elimination of unnecessary packaging, light-weighting packaging used, sourcing packaging with high recycled content and introducing a packaging buy-back scheme to re-use packaging.

Declaration and Sign Off

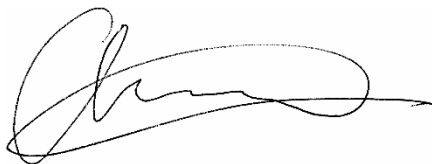
This Carbon Reduction Plan has been completed in accordance with PPN 06/21 and associated guidance and reporting standard for Carbon Reduction Plans.

Emissions have been reported and recorded in accordance with the published reporting standard for Carbon Reduction Plans and the GHG Reporting Protocol corporate standard¹ and uses the appropriate Government emission conversion factors for greenhouse gas company reporting².

Scope 1 and Scope 2 emissions have been reported in accordance with SECR requirements, and the required subset of Scope 3 emissions have been reported in accordance with the published reporting standard for Carbon Reduction Plans and the Corporate Value Chain (Scope 3) Standard³.

This Carbon Reduction Plan has been reviewed and signed off by the board of directors (or equivalent management body).

Signed on behalf of the Supplier:



Date: 23/08/2023

¹ <https://ghgprotocol.org/corporate-standard>

² <https://www.gov.uk/government/collections/government-conversion-factors-for-company-reporting>

³ <https://ghgprotocol.org/standards/scope-3-standard>