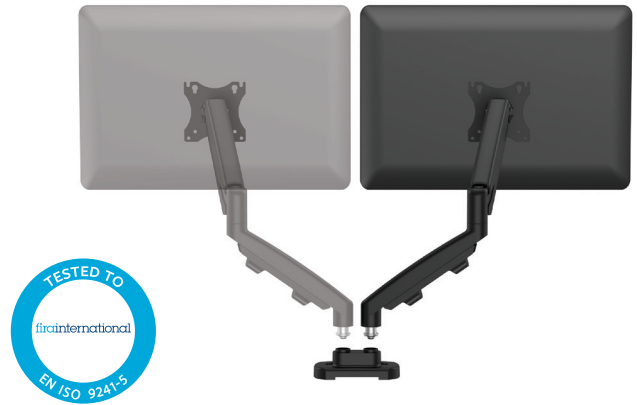


Dual Monitor Arm Kit



Features:

- Convert your Eppa™ single monitor arm into a dual configuration and create a multi-display, productive workspace.
- Eppa™ offers effortless gas spring finger touch adjustment, perfect for hot desking and collaborative working.
- Minimalistic and stylish design with built-in cable management to keep you tangle free.
- Desk clamp and grommet mount included for secure and easy attachment options.
- Available in black, white or silver.
- Tested by FIRA International Ltd to comply with the ergonomic requirements set out in the European Health and Safety Legislation: EN ISO 9241-5.

Specifications:

	White	Black	Silver
Item Number	9683801	9683601	9683701
Colour	RAL 9016	RAL 9017	RAL 9023
Product Dimensions (H x W x D)	480 x 117 x 565mm		
Product Weight	4.34kg		
Height Adjustment Range	266mm		
Height Adjustment Measurements	140 - 406mm		
Reach Range	102 - 538mm		
Rotation	360°		
Pan	180°		
Tilt	+/- 90°		
Arm Swivel	360°		
VESA Compliant	75 x 75 100 x 100		
Desk Compatibility	Desk Thickness: 10 - 85mm Grommet Size: 8 - 82mm		
Tension Adjustments	Yes		
Weight Capacity (kg)	1 - 8kg		
Maximum Monitor Size	39" / 99.06cm left to right		
Outer Pack Barcode (SCS)	50043859749374	50043859749350	50043859749367
Warranty	5 years limited		