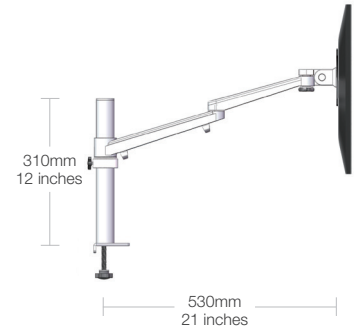
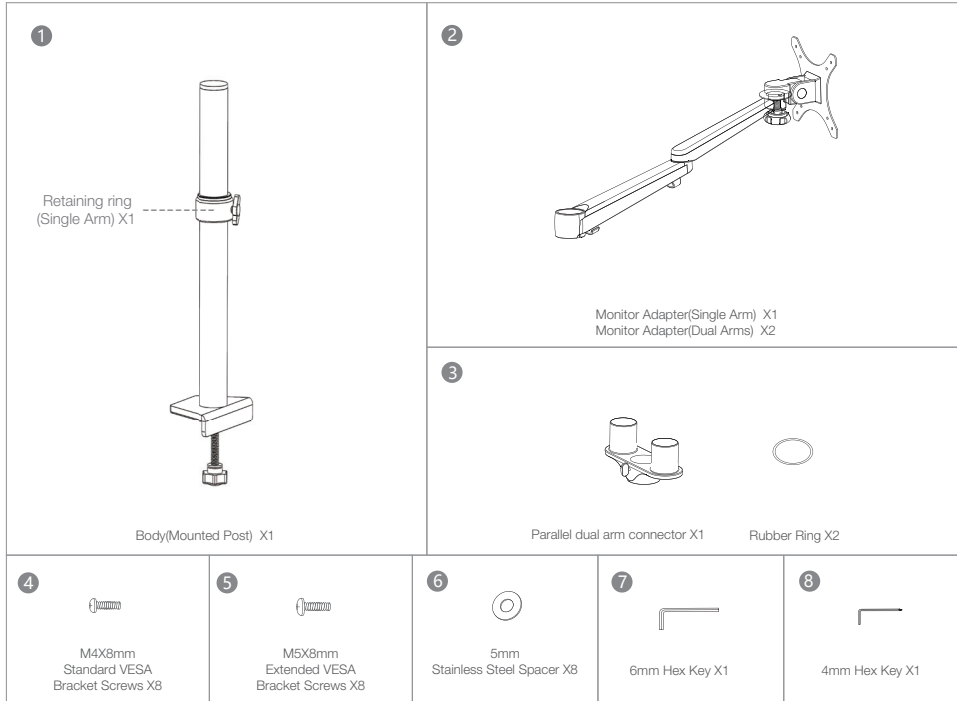


Monitor Arms

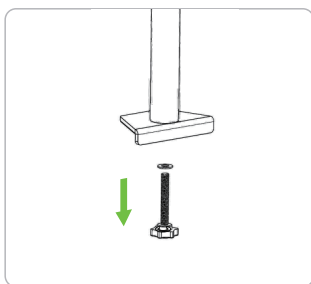
for DeskRite 100 sit-stand platform



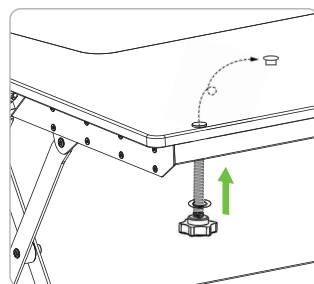
Screen
Max weight: 7kg/15lbs
Max size: 680mm/27inches

- 9820753 Monitor Arm - Single
- 9820754 Monitor Arm - Dual

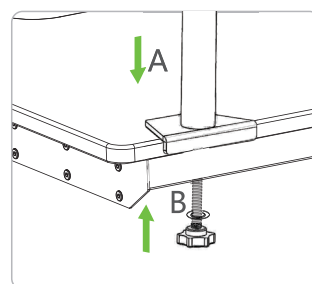
Installation instructions



1 Remove the base screw from column.



2 Push the bolt up through the desktop and open cover.



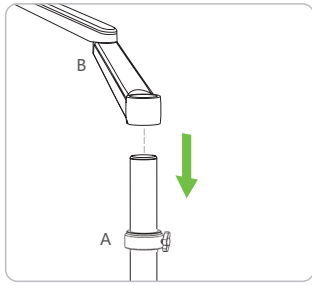
3 Place the column (A) then tighten the bolt (B) underneath, secure the main column.

Continued overleaf...

Installation instructions

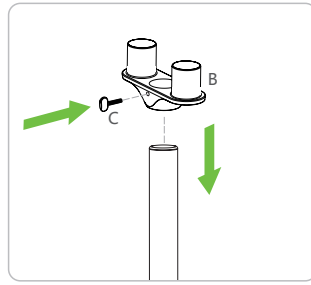
...continued

For Installation of Single Arm

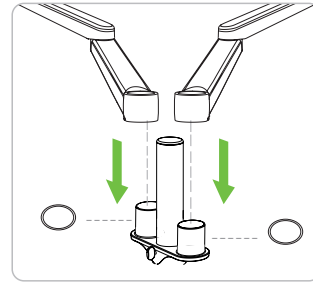


4 Slide the retaining ring (A) onto the column, then insert the double section arm (B) onto upright column.

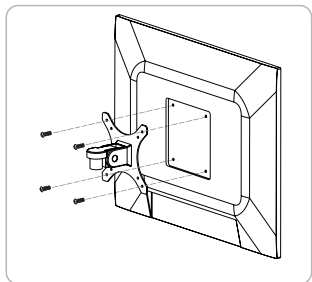
For Installation of Dual Arm



5 Insert the dual arm connector (B) into the post. Adjust the appropriate position then tighten the screw (C).



6 Slide the nylon washers onto the dual arm connector then position both arms onto the connector.



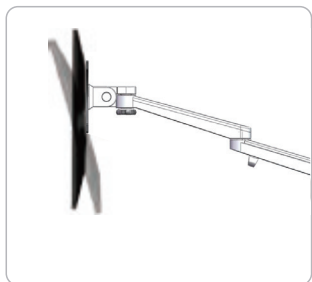
7 Place VESA bracket in position on back of the monitor with lip facing up, attach using 4 screws provided.



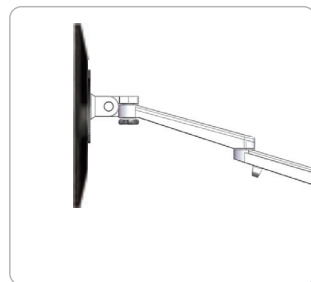
8 After positioning at desired angle tighten frame with the 6mm hex key to prevent it from dropping.



9 Tighten frame with a 4mm hex key to prevent it from dropping.



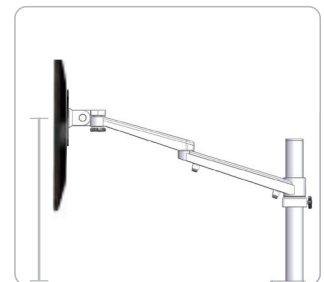
Tilt adjustment
+90° / -80°



Level adjustment
180°



Cantilever adjustment
360°



Height adjustment
max 460mm
max 18 inches